



WORLD'S BEST
ALLOY BULLBARS

East Coast Bullbars (ECB Pty Ltd)

Tel: 07 3897 5700

Fax: 07 3283 1168

ecb@ecb.com.au www.ecb.com.au

29 Snook St
Clontarf QLD 4019
Australia

Po Box 122
Margate QLD 4019
Australia

EAH152SY

REPLACES: 00.00.00
REVISED: 15.12.16

FITTING INSTRUCTIONS

HOLDEN COLORADO 6/16on BIG TUBE™ FOG LIGHT PROTECTION BAR VEHICLE FRONTAL PROTECTION SYSTEM (VFPS) FOR AIR BAG & ADR COMPLIANT VEHICLES

Check installation hardware before commencing.

1. Lift bonnet
2. Remove two T20 torx head screws from the guard liner per side and unplug fog lights.
3. Remove eight T20 torx head screws from the top of grille, and five 10mm head bolts from under side of bumper. Pull outer edge of bumper outwards to unclip from guard and under headlight each side. Remove front bumper. **See figure 1.**
4. From under vehicle, remove four 10mm head bolts and two plastic push / pull clips from under plastic body guard. Remove plastic body guard.
5. Remove front bumper support, four 15mm head bolts from end of chassis. **See figure 2.**
6. Mark and cut left and right bumper retainers. **See figure 3.** Drill two pop rivets out of rear of retainer and remove. **Note: Blow filings clear and treat all exposed metal with a rust inhibitor.**
7. Align guard infill (supplied) with side of guard. Fit guard liner into slot at rear of infill. Using the infill as a guide mark and drill two 6mm holes on outer under edge of front guard. **Note: Blow filings clear and treat all exposed metal with a rust inhibitor.** Install using two M6 x 20 bolts, washers and nyloc nuts (supplied). Secure liner to infill using speed clips and original screws from the lower guard liner. Care must be taken when fitting infill on guard to ensure correct positioning so infill cannot rub on protection bar. **See figure 4.**
8. Mark and cut inner guards. **See figures 5 and 6.**
9. Using a die grinder or similar, enlarge front hole on the inside of rail large enough to fit 44mm spacer tube. **Note: Blow filings clear and treat all exposed metal with a rust inhibitor. See figure 7.**
10. Flatten out tab on the end of chassis rail so steel mount sits flush. **See figure 8.**
11. Fit ECB steel mounting bracket (supplied) onto chassis rail using M10 x 40 bolts, spring washer, flat washers and one 50 x 25 x 6 washer plate and one 40 x 40 x 6 washer plate per side (supplied) **finger tighten only.** Fit M12 x 75 bolt, spring washer, flat washer, nuts and 44mm tube spacer (supplied) into front side hole on rail. Ensure mount is central to body and level and **tighten all bolts. See figure 9.**
12. Mark and cut left and right air scoop. **See figures 10 and 11. Caution:** leave as much of this air dam in place as possible as cooling system of vehicle when driven under fully laden conditions (at close to maximum weight of vehicle and trailer combined), may be affected (original clips will snap, refit with ECB clips supplied).



East Coast Bullbars (ECB Pty Ltd)

Tel: 07 3897 5700

Fax: 07 3283 1168

ecb@ecb.com.au www.ecb.com.au

29 Snook St
Clontarf QLD 4019
Australia

Po Box 122
Margate QLD 4019
Australia

13. Remove bumper sensors and wiring harness and relocate into the parking sensor mounts fitted to the protection bar. Ensure silicon ring is attached to front of sensor. Sensor should be aligned with front of parking sensor mount. Rotate parking sensor mount to suit direction parking sensor was removed from vehicle. **See figure 12 and 13.** Zip tie wiring harness to channel using zip ties (supplied).
14. Mark and cut bumper under headlights and across under grille. **See figures 14 and 15.**
15. Refit bumper in the reverse steps of 2 and 3.
16. Fit ECB LED indicator / park lights / DRL (supplied) into protection bar as per instructions supplied with the LED indicator kit. **See figure 16.**
17. Splice ECB wiring harness into wiring harness behind headlight using cable locks (supplied). Ensure harness is clear of sharp edges and moving parts.
18. Connect ECB Quick Click fog light wiring harness (supplied) into original wiring harness.
19. Attach ECB fog lights to protection bar. Place M6 x 20 bolts, spring washers (supplied) through light mount from inside and attach nut to top. Slide assembly into light mount in Protection bar and centralize light to hole. **TIGHTEN FIRM ONLY. See figure 17.**
20. Attach 6mm clip lock trim (supplied) to top of ECB protection bar and skirt around winch opening. **NOTE:** Trim off lower edge on an angle so trim will sit flush with end of protection bar. **See figures 18, 19 and 20.**
21. Fit ECB protection bar onto steel mount and fix with bolts supplied, eight M12 x 40 bolts, flat washers, spring washers and nuts (supplied). Align protection bar and tighten all bolts. **See figures 21 and 22.**
22. Refit plastic body guard with original 10mm head bolts at rear, fit two M10 x 35 bolts, spring washers and flat washers (supplied) in front holes and original clips in centre holes.
23. Check bumper sensors for correct operation.
24. Connect and check ECB lights for correct operation.
25. Install fog light surrounds (supplied) to fog light openings and oval cut outs on inside of protection bar. Large side of surround to inside of opening on lights and oval cut outs. **See figure 23.**

ENSURE NUMBER PLATE IS CLEARLY VISABLE

Note: When fitting/refitting the licence plate to the vehicle, ensure there is no obstruction to licence plate vision in accordance with local authorities. If required relocate licence plate to an alternate location.

Further VFPS Notes:

- a) Do not attach VFPS to the vehicle using anchorages not intended for this purpose (e.g. engine mounting bolts).
- b) Do not use this product for any vehicle make or model, other than those specified by the VFPS manufacturer.
- c) Do not remove the plaque or label from the VFPS.
- d) Do not modify the structure of the VFPS in any way.
- e) No accessory or fitment should project forward of the VFPS forward profile.
- f) **ENSURE THESE INSTRUCTIONS ARE LEFT WITH VEHICLE OWNER AND/OR OPERATOR.**



East Coast Bullbars (ECB Pty Ltd)

Tel: 07 3897 5700

Fax: 07 3283 1168

ecb@ecb.com.au www.ecb.com.au

29 Snook St
Clontarf QLD 4019
Australia

Po Box 122
Margate QLD 4019
Australia

**WORLD'S BEST
ALLOY BULLBARS**

IMPORTANT INFORMATION

Periodically check bolts and nuts for correct tightness, especially if travelling on rough roads

FITTING KIT

1 – ECB Steel mounting bracket	6 – M6 x 20 bolts
1 – Pair ECB Guard infills– IN KIT	8– M6 flat washers
2 – 15nb tube spacers, 44mm long	2 – M6 spring washers
2 – 50 x 25 x 6 Washer plates	4 – M6 nyloc nuts
2 – 40 x 40 x 6 Washer plates	2 – M6 nuts
8 – M12 x 1.75 x40 bolts	1 – ECB indicator / park kit/ DRL (ICLED105ECB)
2 – M12 x 1.75 x 75 bolts	8 – Cable locks
20 – M12 flat washers	1 – ECB fog light kit
10 – M12 spring washers	1 – ECB fog light harness kit (IC05D40S1004ECBH)
10 – M12 x 1.75 nuts	4 – Fog light surrounds
4 – M10 x 1.25 x 40 bolts	4 – Plastic screw scrivets
2 – M10 x 1.25 x 35 bolts	1 – 2350 mm length 6mm clip lock trim
6 – M10 flat washers	4 – 300mm Zip ties
6 – M10 spring washers	

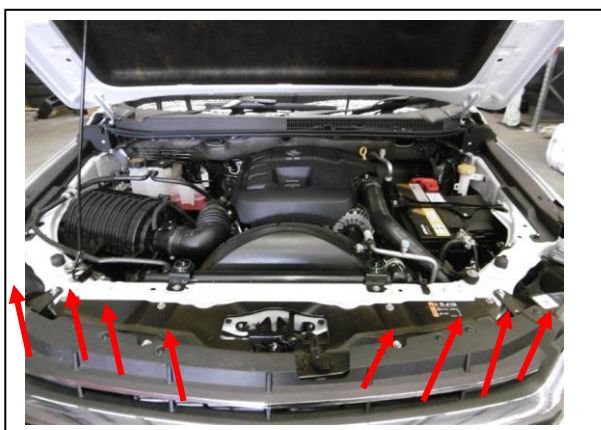


Figure 1: Remove grille screws.



Figure 2: remove bumper support.



Figure 3: Trim lower bumper retainer to front corner of guard.



Figure 4: Correct fitment of infill to guard on passenger side.



**WORLD'S BEST
ALLOY BULLBARS**

East Coast Bullbars (ECB Pty Ltd)

Tel: 07 3897 5700

Fax: 07 3283 1168

ecb@ecb.com.au www.ecb.com.au

29 Snook St
Clontarf QLD 4019
Australia

Po Box 122
Margate QLD 4019
Australia



Figure 5: Trim line L/H liner



Figure 6: Trim line R/H liner

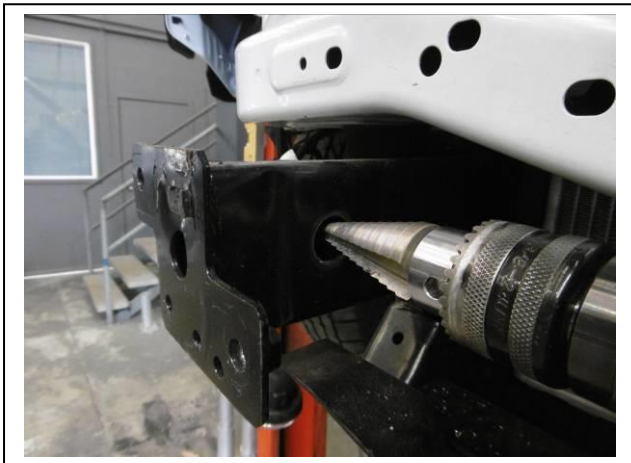


Figure 7: Enlarge hole to fit tube spacer.

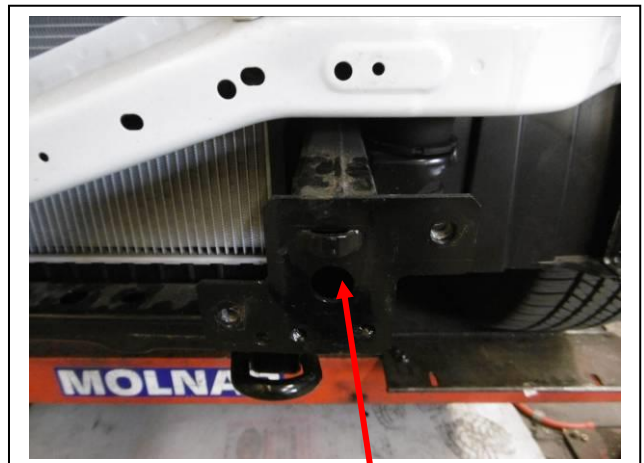


Figure 8: Flatten down tab.



Figure 9: Steel mount installed



Figure 10: Trim line R/H air scoop

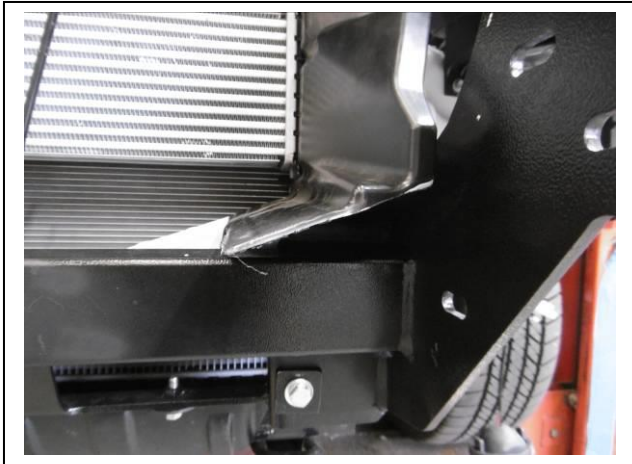


Figure 11: L/H air scoop fitted.



Figure 12: Relocate sensor and wiring into protection bar.



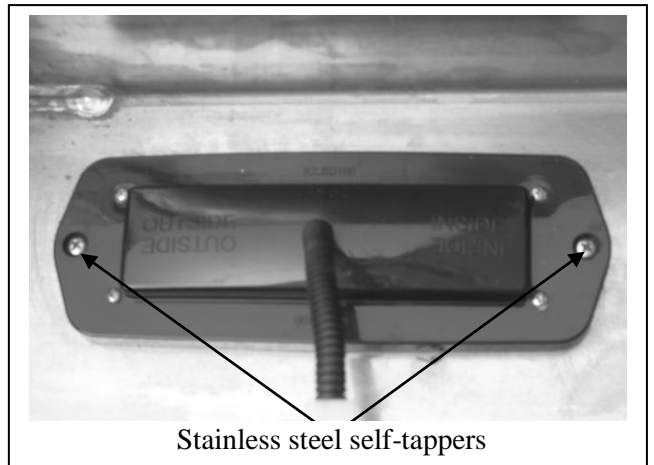
Figure 13: Sensor fitted into housing in protection bar.



Figure 14: Cut bumper under headlight across to grille



Figure 15: Cut across grille to fit over steel mount leaving grille mount on grille.



Stainless steel self-tappers

Figure 16



East Coast Bullbars (ECB Pty Ltd)

Tel: 07 3897 5700

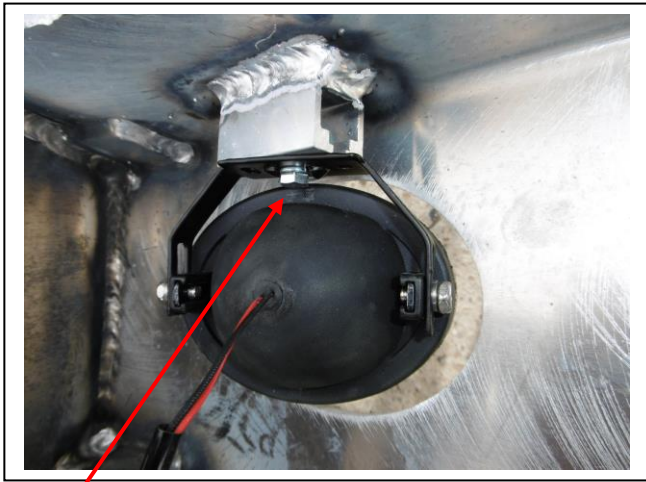
Fax: 07 3283 1168

ecb@ecb.com.au www.ecb.com.au

29 Snook St
Clontarf QLD 4019
Australia

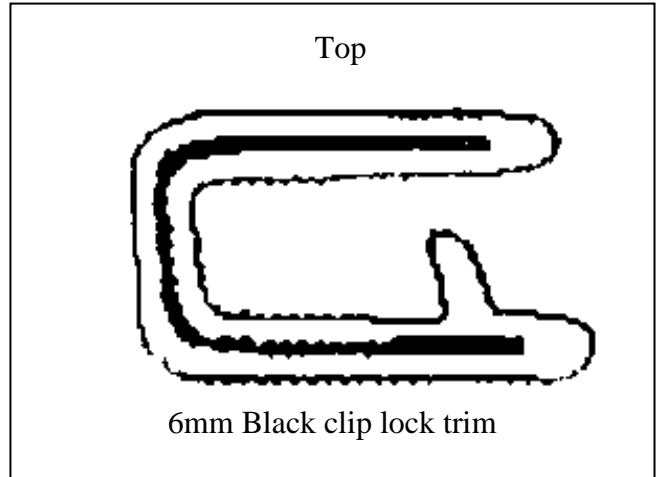
Po Box 122
Margate QLD 4019
Australia

WORLD'S BEST
ALLOY BULLBARS



M6 bolt

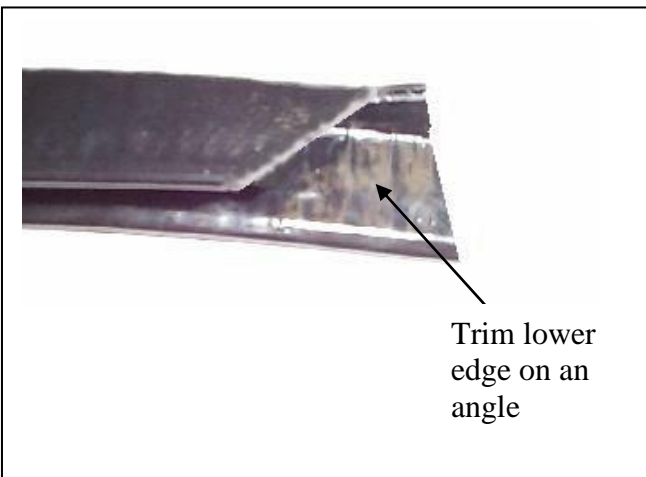
Figure 17



Top

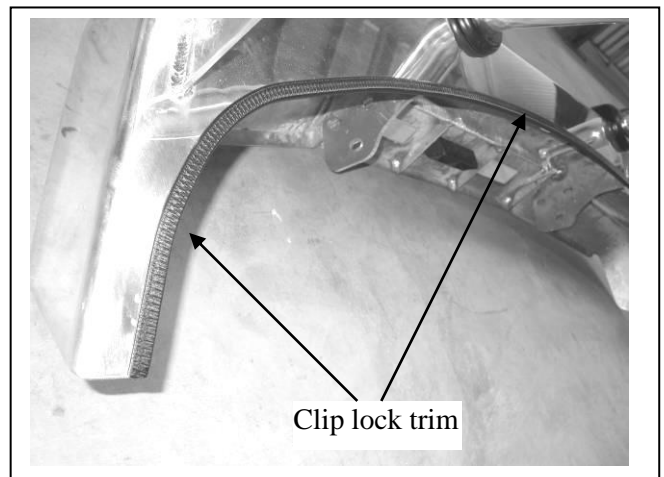
6mm Black clip lock trim

Figure 18



Trim lower
edge on an
angle

Figure 19



Clip lock trim

Figure 20



Figure 21: Side view.



Figure 22: Front view.



**WORLD'S BEST
ALLOY BULLBARS**

East Coast Bullbars (ECB Pty Ltd)

Tel: 07 3897 5700

Fax: 07 3283 1168

ecb@ecb.com.au www.ecb.com.au

29 Snook St
Clontarf QLD 4019
Australia

Po Box 122
Margate QLD 4019
Australia



Figure 23: Oval cut out surround



**WORLD'S BEST
ALLOY BULLBARS**

East Coast Bullbars (ECB Pty Ltd)

Tel: 07 3897 5700

Fax: 07 3283 1168

ecb@ecb.com.au www.ecb.com.au

29 Snook St
Clontarf QLD 4019
Australia

Po Box 122
Margate QLD 4019
Australia



**WORLD'S BEST
ALLOY BULLBARS**

East Coast Bullbars (ECB Pty Ltd)

Tel: 07 3897 5700

Fax: 07 3283 1168

ecb@ecb.com.au www.ecb.com.au

29 Snook St
Clontarf QLD 4019
Australia

Po Box 122
Margate QLD 4019
Australia

We value your comments

Dear Fitter,

ECB would like to know how you went with the installation of this product. We value your comment and may need to contact you to clarify some details so please complete your contact details clearly.

We would appreciate if you could complete as many of the following details as possible.

Your Name:	Your contact No.
Product Part No.	Product Invoice No.
Product Description:	Make, model, and year of vehicle:
Product Work Order No.	Company your from/Company product purchased from:

Date of Fitment: ____/____/____

Was the fitting hardware supplied complete? Yes No

If no what was not supplied

Did the installation go well? Yes No

Please provide comments

Please draw diagrams if you need to.

Post to
Reply Paid 122
PO Box 122

Fax to
(07) 3283 1168



**WORLD'S BEST
ALLOY BULLBARS**

East Coast Bullbars (ECB Pty Ltd)

Tel: 07 3897 5700

Fax: 07 3283 1168

ecb@ecb.com.au www.ecb.com.au

29 Snook St
Clontarf QLD 4019
Australia

Po Box 122
Margate QLD 4019
Australia

Margate QLD 4019



WORLD'S BEST ALLOY BULLBARS

East Coast Bullbars (ECB Pty Ltd)

Tel: 07 3897 5700

Fax: 07 3283 1168

ecb@ecb.com.au www.ecb.com.au

29 Snook St
Clontarf QLD 4019
Australia

Po Box 122
Margate QLD 4019
Australia

DESPATCH CHECKLIST EAH152SY

Work Order #		See other side of this page for photos of all mounts
Finish:		
Transport:		
Due Date:		

OC.....1 – Steel mounting brackets.

OC.....2 – ECB Overrides – **Fitted to Bar**

OC.....7 – 6mm Air Vents – **Fitted to Bar**

OC.....4 – Parking Sensor Mounts – **Fitted to Bar**

BK.....1 – Bolt Kit.

BK.....1 – LED ECB indicator / park light kit/ DRL (ICLED105ECB)

BK.....1 – 2350mm length 6mm clip lock

BK.....4 – Fog light surrounds

_____/_____
Wrapper's initials / Checker initials



Is this product “the best it can be” Yes

If NO fix before continuing

All parts checked and completed by:

Nut and bolts: _____ Date __/__/__

Order control: _____ Date __/__/__

Final wrap check: _____ Date __/__/__



**WORLD'S BEST
ALLOY BULLBARS**

East Coast Bullbars (ECB Pty Ltd)

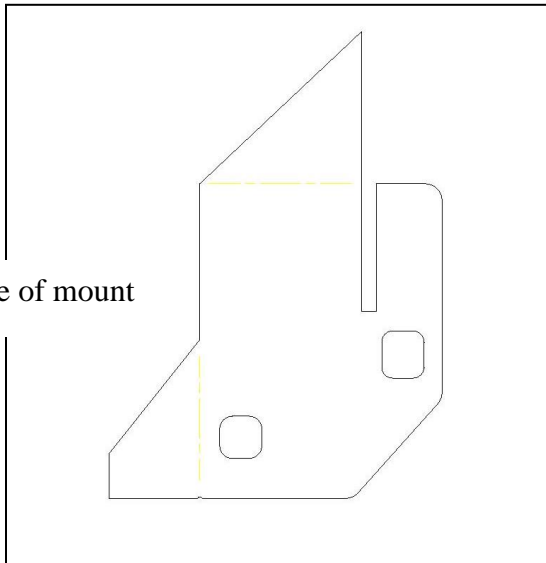
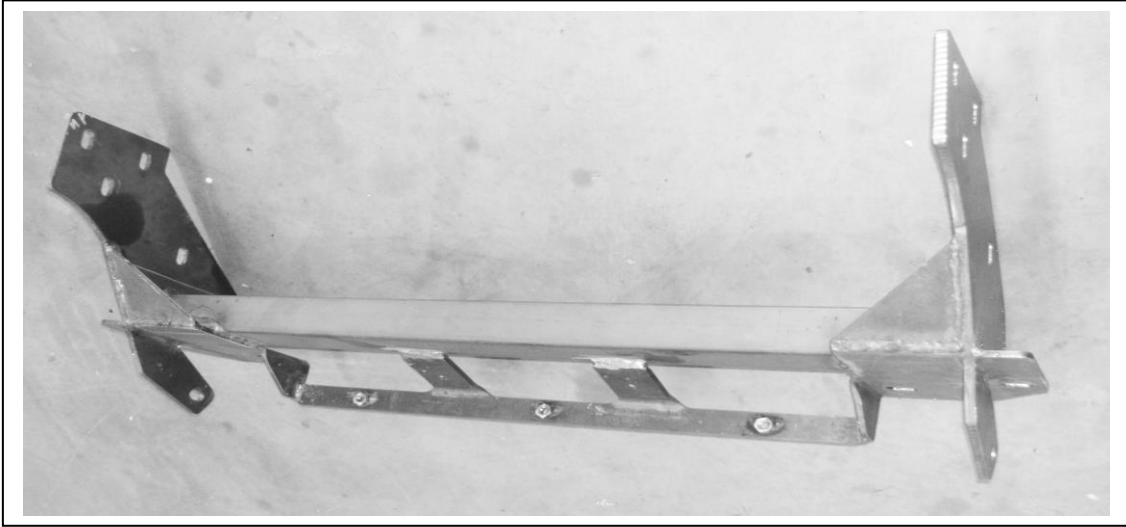
Tel: 07 3897 5700

Fax: 07 3283 1168

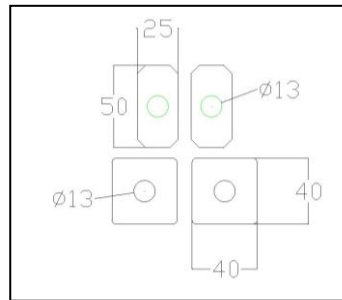
ecb@ecb.com.au www.ecb.com.au

29 Snook St
Clontarf QLD 4019
Australia

Po Box 122
Margate QLD 4019
Australia



Rear plate of mount



Washer plates





**WORLD'S BEST
ALLOY BULLBARS**

East Coast Bullbars (ECB Pty Ltd)

Tel: 07 3897 5700

Fax: 07 3283 1168

ecb@ecb.com.au www.ecb.com.au

29 Snook St
Clontarf QLD 4019
Australia

Po Box 122
Margate QLD 4019
Australia

_____/_____
Wrapper's initials / Checker initials